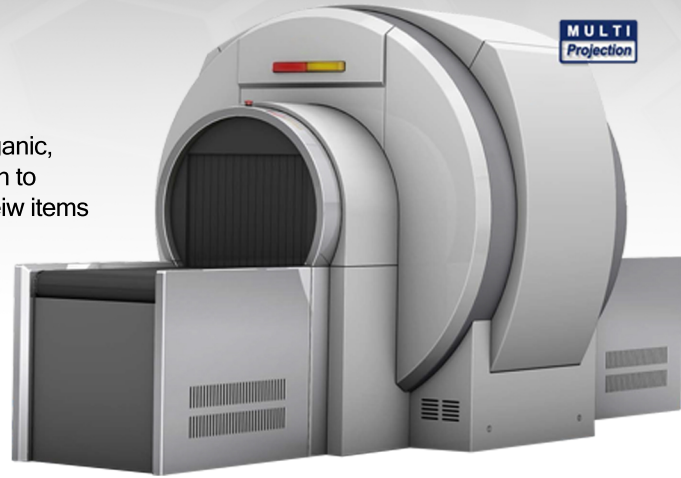


CT-SCAN3D - Multi Energy X-ray Security Inspection Equipment

Overview

The CT-SCAN3D is a 3D Multi Energy X-ray Security Inspection system is an intelligent safety inspection system which is able to detect Organic, Non- Organic, Mixtures and Light metals whilst maintaining a reasonable user friendly design to maintain a highly efficient operation. The CT-Scan will allow the operator to view items from different views to get multi projection X-ray images.

- **Tunnel Size: 655mm (W) x 505mm (H)**
- **Dimensions: 3396mm (L) x 1330 mm (W)x 2145 mm (H)**



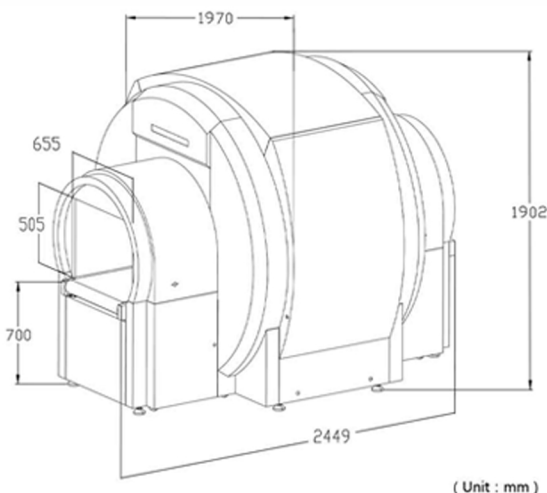
Features

- **Provides regular and/or multi-projection image**
- **Using dual monitors can provide two different views of the same image**
- **High precision multi-energy X-ray photodiode array, clearer image**
- **Real-time keeping operation journal to provide necessary information for rapid diagnosis and maintenance**
- **Built-in abundant image processing algorithms, powerful enhancement and conversion**

Specifications

- **Tunnel Size: 655mm (W) x 505mm (H)**
- **Conveyor Height: 700mm**
- **Conveyor Speed: 0.20m/s**
- **Max Load: 160kg (Evenly distributed)**
- **System Noise: <65dB (A)**
- **Image Resolution: 17" HD LCD Widescreen**
- **Power Consumption: 0.6 (KVA)**
- **Size / Weight: 2449mm (L) x 1970mm (W) x 1902mm (H) / 3600KG**
- **Working Temperature / Humidity: 0C ~ + 45C / 20% ~ 95% (None-condensing)**
- **Storage Temperature / Humidity: 40C ~ + 60C / 20% ~ 95% (None-condensing)**
- **Power Supply: AC 220 V (+10% ~ -15%) 50+3(Hz)**

Technical Drawing



CONTACT US

- @ info@akkula.co.uk
-  Akkula Group
-  +44 (0) 117 318 0845 - UK
-  +1 (702) 509 - 7610 - Americas

Follow us on Social Media

