

5030 CORPORATE- Multi Energy X-ray Security Inspection Equipment

■ Overview

The 5030 CORPORATE Multi Energy X-ray Security Inspection system is an intelligent safety inspection system which is able to detect Organic, Non- Organic, Mixtures and Light metals whilst maintaining a reasonable user friendly design to maintain a highly efficient operation

- **Tunnel Size: 505mm (W) x 305mm (H)**
- **Dimensions: 1450mm (L) x 835 mm (W)x 1200 mm**

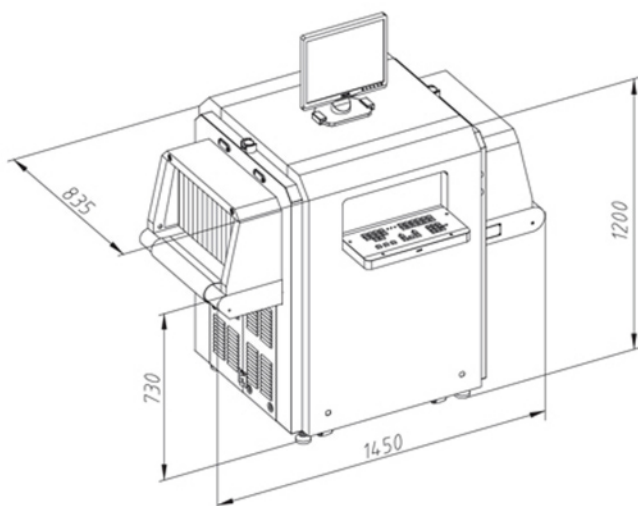
■ Features

- **Multi-Energy penetration system**
- **New x-ray protection technology**
- **Multi-functions image processing system**
- **EI-TIP(Threat Image Projection) function**
- **Collects high-speed parallel of detection data**
- **Sophisticated design with multi-functions operator interface**

■ Specifications

- **Tunnel Size: 505mm (W) x 305mm (H)**
- **Conveyor Height: 730mm**
- **Conveyor Speed: 0.2m/s**
- **Max Load: 100kg (Evenly distributed)**
- **System Noise: <65dB (A)**
- **Image Resolution: 17" LCD 1280 x 1024**
- **Power Consumption: About 0.40 (KVA)**
- **Size / Weight: 1450mm (L) x 825mm (W) x 1200mm (H) / 380KG**
- **Working Temperature / Humidity:**
0C ~ + 45C / 20% ~ 95% (None-condensing)
- **Storage Temperature / Humidity:**
40C ~ + 65C / 20% ~ 95% (None-condensing)
- **Power Supply: AC 220 V (+10% ~ -15%) 50+3(Hz)**

■ Technical Drawing



■ CONTACT US

@ info@akkula.co.uk

📞 Akkula Group

☎ +44 (0) 117 318 0845 - UK

☎ +1 (702) 509 - 7610 - Americas

Follow us on Social Media



6040 CHECKPOINT - Multi Energy X-ray Security Inspection Equipment

■ Overview

The 6040 CORPORATE Multi Energy X-ray Security Inspection system is an intelligent safety inspection system which is able to detect Organic, Non- Organic, Mixtures and Light metals whilst maintaining a reasonable user friendly design to maintain a highly efficient operation

- **Tunnel Size: 615mm (W) x 415mm (H)**
- **Dimensions: 2300mm (L) x 910 mm (W)x 1320 mm (H)**

■ Features

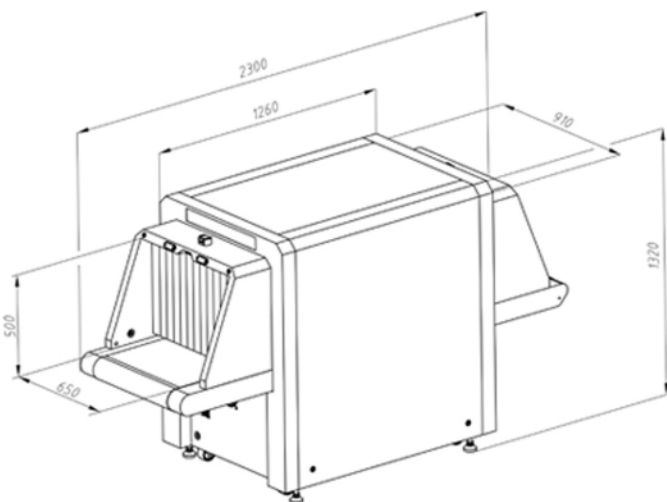
- **Multi-Energy penetration system**
- **New x-ray protection technology**
- **Multi-functions image processing system**
- **EI-TIP(Threat Image Projection) function**
- **Collects high-speed parallel of detection data**
- **Sophisticated design with multi-functions operator interface**
- **Support JPG & BMP image transformation format to USB**



■ Specifications

- **Tunnel Size: 615mm (W) x 415mm (H)**
- **Conveyor Height: 681mm**
- **Conveyor Speed: 0.2m/s**
- **Max Load: 100kg (Evenly distributed)**
- **System Noise: <65dB (A)**
- **Image Resolution: 17" LCD 1280 x 1024**
- **Power Consumption: About 0.40 (KVA)**
- **Size / Weight: 2300mm (L) x 910mm (W) x 1320mm (H) / 410KG**
- **Working Temperature / Humidity: 0C ~ + 45C / 20% ~ 95% (None-condensing)**
- **Storage Temperature / Humidity: 40C ~ + 65C / 20% ~ 95% (None-condensing)**
- **Power Supply: AC 220 V (+10% ~ -15%) 50+3(Hz)**

■ Technical Drawing



■ CONTACT US

@ info@akkula.co.uk

🏢 Akkula Group

☎ +44 (0) 117 318 0845 - UK

☎ +1 (702) 509 - 7610 - Americas

Follow us on Social Media



6550 CHECKPOINT - Multi Energy X-ray Security Inspection Equipment

■ Overview

The 6550 Checkpoint Multi Energy X-ray Security Inspection system is an intelligent safety inspection system which is able to detect Organic, Non- Organic, Mixtures and Light metals whilst maintaining a reasonable user friendly design to maintain a highly efficient operation. The 6550 Checkpoint has two optional speeds allowing the operator to alter the speed for greater throughput at higher times of capacity.

- **Tunnel Size: 650mm (W) x 500mm (H)**
- **Dimensions: 2039mm (L) x 905 mm (W)x 1370 mm (H)**
- **Two optional speeds (0.2m/s and 0.3m/s) improves efficiency by 1.5X**

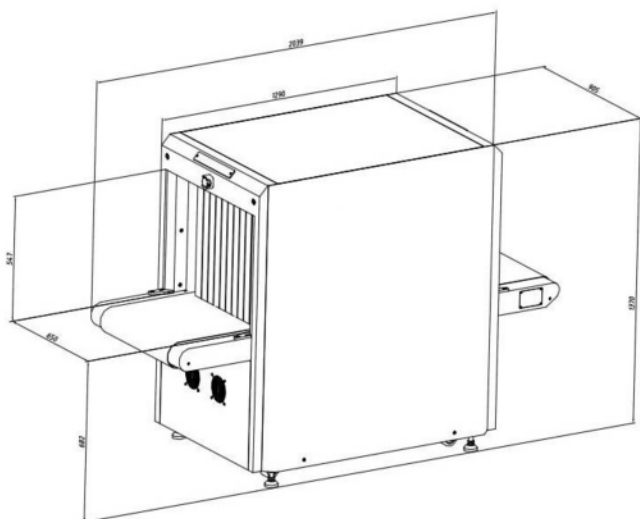
■ Features

- **EI-TIP(Threat Image Projection) function**
- **Multi-functions image processing system**
- **High-precision X-ray detectors, making images sharp & clear**
- **Two optional speeds (0.2m/s and 0.3m/s) improves efficiency by 1.5X**
- **Collects high-speed parallel of detection data**
- **Sophisticated design with multi-functions operator interface**
- **Support JPG & BMP image transformation format to USB**

■ Specifications

- **Tunnel Size: 650mm (W) x 500mm (H)**
- **Conveyor Height: 682mm**
- **Conveyor Speed: 0.2m/s or 0.3m/s**
- **Max Load: 160kg (Evenly distributed)**
- **System Noise: <65dB (A)**
- **Image Resolution: 17" LCD 1280 x 1024**
- **Power Consumption: About 0.46 (KVA)**
- **Size / Weight: 2039mm (L) x 905mm (W) x 1370mm (H) / 600KG**
- **Working Temperature / Humidity:**
0C ~ + 45C / 20% ~ 95% (None-condensing)
- **Storage Temperature / Humidity:**
40C ~ + 65C / 20% ~ 95% (None-condensing)
- **Power Supply: AC 220 V (+10% ~ -15%) 50+3(Hz)**

■ Technical Drawing



■ CONTACT US

@ info@akkula.co.uk

📞 Akkula Group

☎ +44 (0) 117 318 0845 - UK

☎ +1 (702) 509 - 7610 - Americas

Follow us on Social Media



CT-SCAN3D - Multi Energy X-ray Security Inspection Equipment

■ Overview

The CT-SCAN3D is a 3D Multi Energy X-ray Security Inspection system is an intelligent safety inspection system which is able to detect Organic, Non- Organic, Mixtures and Light metals whilst maintaining a reasonable user friendly design to maintain a highly efficient operation. The CT-Scan will allow the operator to view items from different views to get multi projection X-ray images.

- **Tunnel Size: 655mm (W) x 505mm (H)**
- **Dimensions: 3396mm (L) x 1330 mm (W)x 2145 mm (H)**

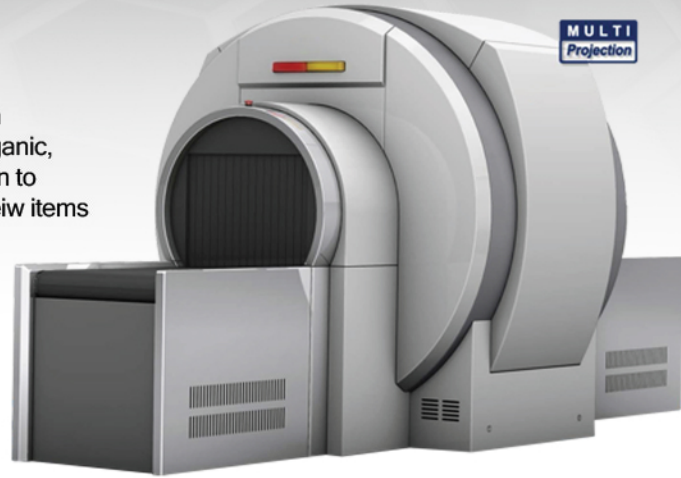
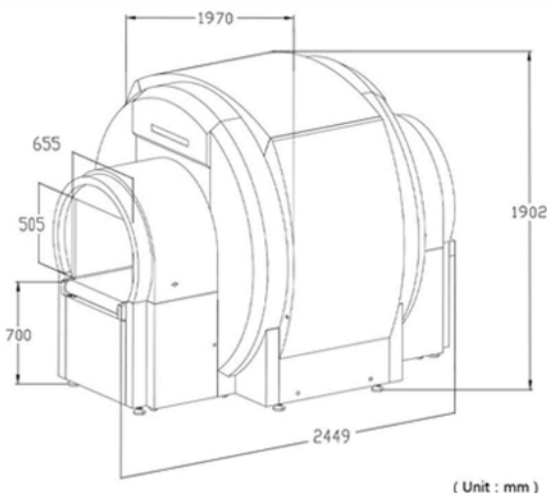
■ Features

- Provides regular and/or multi-projection image
- Using dual monitors can provide two different views of the same image
- High precision multi-energy X-ray photodiode array, clearer image
- Real-time keeping operation journal to provide necessary information for rapid diagnosis and maintenance
- Built-in abundant image processing algorithms, powerful enhancement and conversion

■ Specifications

- **Tunnel Size: 655mm (W) x 505mm (H)**
- **Conveyor Height: 700mm**
- **Conveyor Speed: 0.20m/s**
- **Max Load: 160kg (Evenly distributed)**
- **System Noise: <65dB (A)**
- **Image Resolution: 17" HD LCD Widescreen**
- **Power Consumption: 0.6 (KVA)**
- **Size / Weight: 2449mm (L) x 1970mm (W) x 1902mm (H) / 3600KG**
- **Working Temperature / Humidity: 0C ~ + 45C / 20% ~ 95% (None-condensing)**
- **Storage Temperature / Humidity: 40C ~ + 60C / 20% ~ 95% (None-condensing)**
- **Power Supply: AC 220 V (+10% ~ -15%) 50+3(Hz)**

■ Technical Drawing



■ CONTACT US

@ info@akkula.co.uk

📞 Akkula Group

☎ +44 (0) 117 318 0845 - UK

☎ +1 (702) 509 - 7610 - Americas

Follow us on Social Media



10080 CARGO - Multi Energy X-ray Security Inspection Equipment

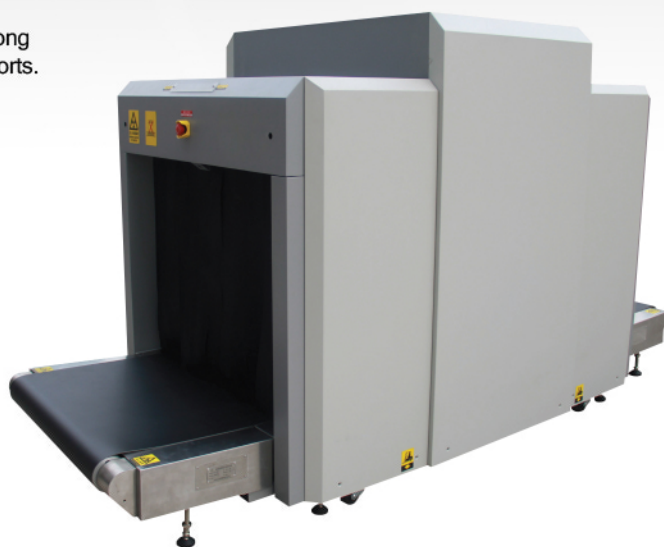
■ Overview

The 10080 CARGO Multi Energy X-ray Security Inspection system is an intelligent safety inspection system which is able to detect Organic, Non-Organic, Mixtures and Light metals whilst maintaining a reasonable user friendly design to maintain a highly efficient operation. The 10080 CARGO is a very popular product among customs facilities, transportation operations, parcel services, asset protection and airports.

- **Tunnel Size: 1010mm (W) x 810mm (H)**
- **Dimensions: 3000mm (L) x 1317 mm (W) x 1650 mm (H)**

■ Features

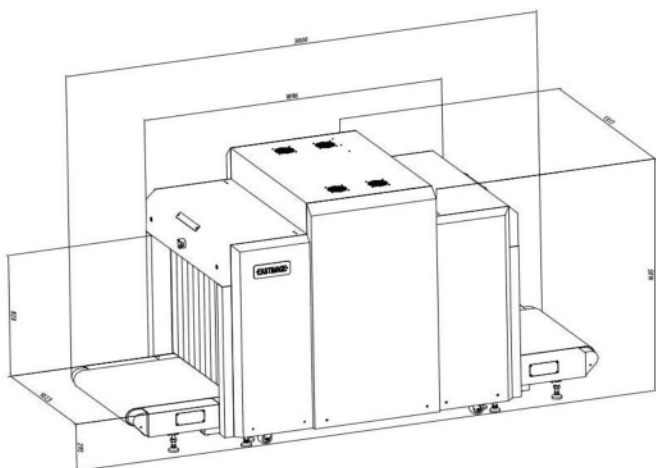
- Portable separate structural design, with independent operator desk
- High-precision X-ray detectors, making images sharp and clear
- Multi-functions image processing system
- EI-TIP(Threat Image Projection) function
- Collects high-speed parallel of detection data
- Big Tunnel design with multi-functions operator interface
- Support JPG & BMP image transformation format to USB



■ Specifications

- **Tunnel Size: 1010mm (W) x 810mm (H)**
- **Conveyor Height: 295mm**
- **Conveyor Speed: 0.2m/s**
- **Max Load: 200kg (Evenly distributed)**
- **System Noise: <65dB (A)**
- **Image Resolution: 22" LCD 1920 x 1080**
- **Power Consumption: About 0.46 (KVA)**
- **Size / Weight: 3000mm (L) x 1317mm (W) x 1650mm (H) /950KG**
- **Working Temperature / Humidity: 0C ~ + 45C / 20% ~ 95% (None-condensing)**
- **Storage Temperature / Humidity: 40C ~ + 60C / 20% ~ 95% (None-condensing)**
- **Power Supply: AC 220 V (+10% ~ -15%) 50+3(Hz)**

■ Technical Drawing



■ CONTACT US

@ info@akkula.co.uk

📞 Akkula Group

☎ +44 (0) 117 318 0845 - UK

☎ +1 (702) 509 - 7610 - Americas

Follow us on Social Media



100100 CARGO - Multi Energy X-ray Security Inspection Equipment

■ Overview

The 100100 CARGO Multi Energy X-ray Security Inspection system is an intelligent safety inspection system which is able to detect Organic, Non-Organic, Mixtures and Light metals whilst maintaining a reasonable user friendly design to maintain a highly efficient operation. The 100100 CARGO is a very popular product among customs facilities, transportation operations, parcel services, asset protection and airports.

- **Tunnel Size:** 1010mm (W) x 1010mm (H)
- **Dimensions:** 3396mm (L) x 1330 mm (W) x 2145 mm (H)

■ Features

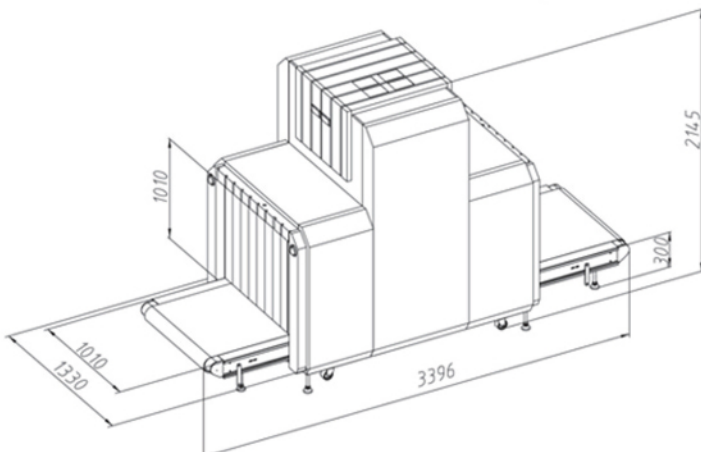
- Portable separate structural design, with independent operator desk
- High-precision X-ray detectors, making images sharp and clear
- Multi-functions image processing system
- EI-TIP(Threat Image Projection) function
- Collects high-speed parallel of detection data
- Big Tunnel design with multi-functions operator interface
- Support JPG & BMP image transformation format to USB



■ Specifications

- **Tunnel Size:** 1010mm (W) x 1010mm (H)
- **Conveyor Height:** 350mm
- **Conveyor Speed:** 0.2m/s
- **Max Load:** 2000kg (Evenly distributed)
- **System Noise:** <65dB (A)
- **Image Resolution:** 22" LCD 1920 x 1080
- **Power Consumption:** About 0.46 (KVA)
- **Size / Weight:** 3396mm (L) x 1330mm (W) x 2145mm (H) /2000KG
- **Working Temperature / Humidity:** 0C ~ + 45C / 20% ~ 95% (None-condensing)
- **Storage Temperature / Humidity:** 40C ~ + 60C / 20% ~ 95% (None-condensing)
- **Power Supply:** AC 220 V (+10% ~ -15%) 50+3(Hz)

■ Technical Drawing



■ CONTACT US

@ info@akkula.co.uk

📞 Akkula Group

☎ +44 (0) 117 318 0845 - UK

☎ +1 (702) 509 - 7610 - Americas

Follow us on Social Media



150150 CARGO - Multi Energy X-ray Security Inspection Equipment

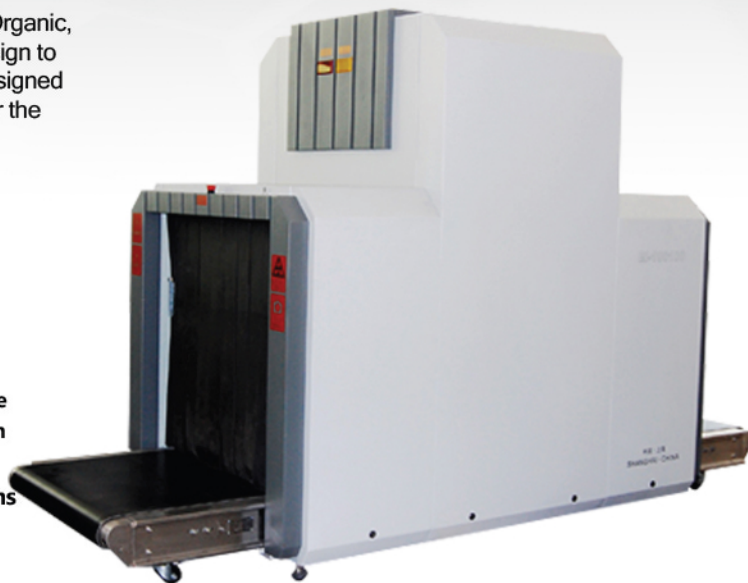
■ Overview

The 150150 CARGO Multi Energy X-ray Security Inspection system is an intelligent safety inspection system which is able to detect Organic, Non- Organic, Mixtures and Light metals whilst maintaining a reasonable user friendly design to maintain a highly efficient operation. The 150150 CARGO has specially designed to meet the needs and applications of warehouses, Couriers and airports for the inspection of bulky parcels, heavy luggage and large goods

- **Tunnel Size: 1500mm (W) x 1505mm (H)**
- **Dimensions: 4350mm (L) x 2890 mm (W)x 2070 mm (H)**

■ Features

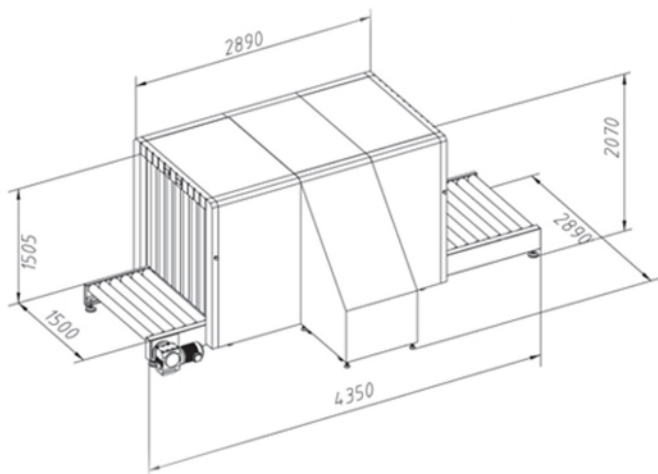
- Portable separate structural design, with independent operator desk
- Side X-ray generator installed, lower X-ray energy attenuation, clearer image
- Built-in various image processing algorithms, multiple image transformation
- EI-TIP(Threat Image Projection) function
- Built-in auto self-diagnostic capability, Monitors and reports problems
- Big Tunnel design with multi-functions operator interface
- Operation log recording, providing complete information for rapid diagnosis and maintenance



■ Specifications

- **Tunnel Size: 1500mm (W) x 1500mm (H)**
- **Conveyor Height: 350mm**
- **Conveyor Speed: 0.2m/s**
- **Max Load: 2000kg (Evenly distributed)**
- **System Noise: <65dB (A)**
- **Image Resolution: 22" LCD 1920 x 1080**
- **Power Consumption: About 0.46 (KVA)**
- **Size / Weight: 4350mm (L) x 3890mm (W) x 2070mm (H) /2000KG**
- **Working Temperature / Humidity: 0C ~ + 45C / 20% ~ 95% (None-condensing)**
- **Storage Temperature / Humidity: 40C ~ + 60C / 20% ~ 95% (None-condensing)**
- **Power Supply: AC 220 V (+10% ~ -15%) 50+3(Hz)**

■ Technical Drawing



■ CONTACT US

@ info@akkula.co.uk

📞 Akkula Group

☎ +44 (0) 117 318 0845 - UK

☎ +1 (702) 509 - 7610 - Americas

Follow us on Social Media



150180 CARGO - Multi Energy X-ray Security Inspection Equipment

■ Overview

The 150180 CARGO Multi Energy X-ray Security Inspection system is an intelligent safety inspection system which is able to detect Organic, Non-Organic, Mixtures and Light metals whilst maintaining a reasonable user friendly design to maintain a highly efficient operation. The 150180 CARGO has specially designed to meet the needs and applications of warehouses, Couriers and airports for the inspection of bulky parcels, heavy luggage and large goods

- **Tunnel Size: 1550mm (W) x 1810mm (H)**
- **Dimensions: 5150mm (L) x 2758 mm (W) x 2500 mm (H)**

■ Features

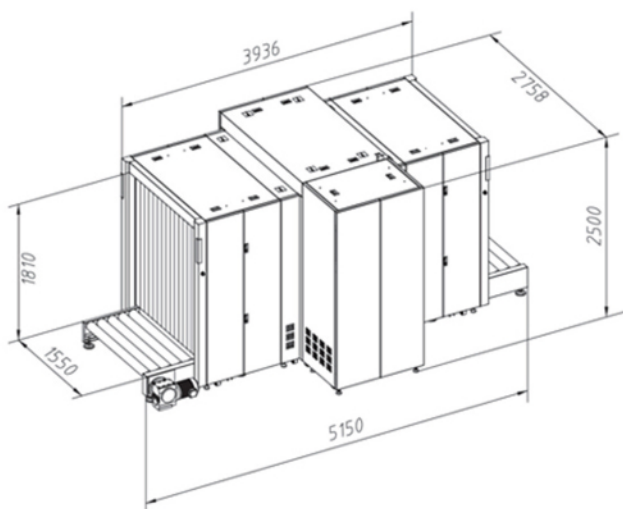
- Portable separate structural design, with independent operator desk
- Collection of high-speed parallel detection data
- Built-in various image processing algorithms, multiple image transformation
- EI-TIP(Threat Image Projection) function
- Built-in auto self-diagnostic capability, Monitors and reports problems
- Big Tunnel design with multi-functions operator interface
- Operation log recording, providing complete information for rapid diagnosis and maintenance



■ Specifications

- **Tunnel Size: 1550mm (W) x 1810mm (H)**
- **Conveyor Height: 350mm**
- **Conveyor Speed: 0.2m/s**
- **Max Load: 2000kg (Evenly distributed)**
- **System Noise: <65dB (A)**
- **Image Resolution: 22" LCD 1920 x 1080**
- **Power Consumption: About 0.46 (KVA)**
- **Size / Weight: 5150mm (L) x 2758mm (W) x 2500mm (H) /2000KG**
- **Working Temperature / Humidity: 0C ~ + 45C / 20% ~ 95% (None-condensing)**
- **Storage Temperature / Humidity: 40C ~ + 60C / 20% ~ 95% (None-condensing)**
- **Power Supply: AC 220 V (+10% ~ -15%) 50+3(Hz)**

■ Technical Drawing



■ CONTACT US

@ info@akkula.co.uk

📞 Akkula Group

☎ +44 (0) 117 318 0845 - UK

☎ +1 (702) 509 - 7610 - Americas

Follow us on Social Media



100100 CARGO - Multi Energy X-ray Security Inspection Equipment

■ Overview

The 100100 MOBILE is a comprehensive mobile inspection system that provides on-the-go detection capability for all security environments. This product is ideal for Temporary checkpoints, airports, outdoor venues, Border crossings, tourist places and bus stations

- **Vehicle Model:** IVECO Turbo daily 1.6T- V42
- **Tunnel Size:** 1010mm (W) x 1010mm (H)
- **Vehicle Dimensions:** 5990mm (L) x 2100 mm (W)x 2770 mm

■ Features

- Comfortable internal working condition, Air conditioned
- Collection of high-speed parallel detection data
- Multi-functions image processing system
- EI-TIP(Threat Image Projection) function
- Stable and Superior performance
- Big Tunnel design with multi-functions operator interface
- Operation log recording, providing complete information for rapid diagnosis and maintenance

■ Specifications

- **Tunnel Size:** 1010mm (W) x 1010mm (H)
- **Penetration:** Typical:32mm steel, Standard:27mm steel
- **Conveyor Speed:** 0.2m/s
- **Max Load:** 200kg (Evenly distributed)
- **Power:** 5.5KW
- **Resolution:** Typical:40AWG, Standard:36AWG
- **Cooling & Running Cycle:** Sealed oil cooling & 100%



- **Vehicle Model:** IVECO Turbo daily 2.8T-V42
- **Vehicle Size:** 5990mm (L) x 2100mm (W) x 2770mm (H)
- **Vehicle Weight:** 3950KG (includes x-ray machine)
- **Dynamo:** 7.1kw/3600rpm,357 cc, 4 stroke air cooling

■ CONTACT US

@ info@akkula.co.uk

S Akkula Group

☎ +44 (0) 117 318 0845 - UK

☎ +1 (702) 509 - 7610 - Americas

Follow us on Social Media



VEHICLE-SCAN - Multi Energy X-ray Security Inspection Equipment

■ Overview

With a direct transmission X-ray imaging system, the Akkula Vehicle Scanner provides the most comprehensive detection capabilities in a passenger vehicle scanner. The Vehicle Scanner has a 3 x 2.8m scanning tunnel for drive through scanning of occupied passenger vehicles. The Akkula Vehicle Scanner has a 240kVp X-ray imaging system: the highest image quality X-ray inspection system available for occupied car and small vehicle screening. The Vehicle Scanner's direct transmission X-ray imaging system provides extensive coverage of all areas of a vehicle from tyre upwards, and integratable with radiation portal detection.

- **Tunnel Size: 3M (W) x 4.5M (H)**
- **Through Speed: 5 MPH**

■ Features

- **Drive-thru scanning of occupied vehicles**
- **High throughput scanning - more than 100 vehicles per hour**
- **Industry leading X-ray image quality**
- **Compact Exclusion zone (less than 2M around the equipment)**
- **X-ray Energy: 1Mv**

■ Specifications

- **Tunnel Size: 3M (W) x 4.5M (H)**
- **Linac Energy: 1 MeV X-ray energy**
- **Working Temperature / Humidity:**
 - 10C ~ + 40C / 5% ~ 95% (None-condensing)
 - 40C with optional Cold weather package
 - +55C with optional Hot weather package

■ CONTACT US

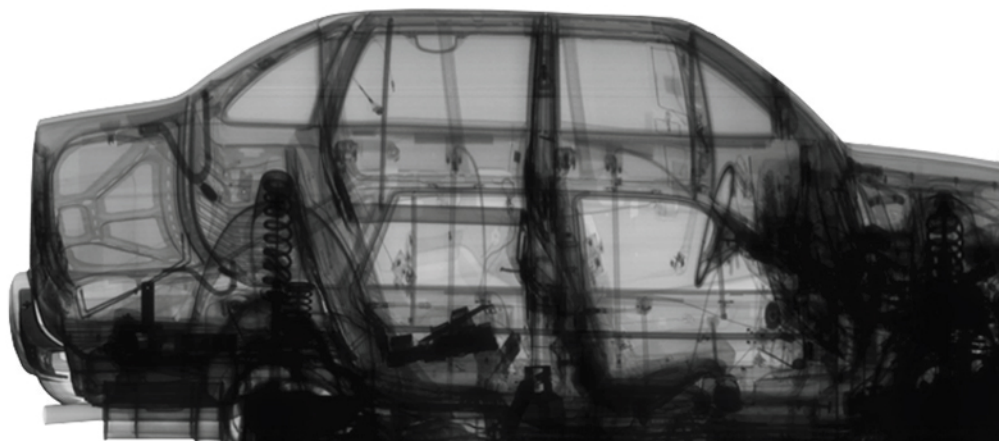
@ info@akkula.co.uk

📍 Akkula Group

☎ +44 (0) 117 318 0845 - UK

☎ +1 (702) 509 - 7610 - Americas

Follow us on Social Media



6 ZONE WALKTHROUGH - Multi Zone Security Metal Detector

■ Overview

The 6 Zone Walkthrough is a multi-purpose metal detector used for high throughput whilst maintaining a reliable zone detection. The 6 zone's typical applications include Transportation facilities, Asset protection, Corporate security, Correctional facilities, Critical infrastructure, entertainment facilities and government buildings. Several units can also be placed within close proximity without causing any electromagnetic interference.

- **Outer Dimensions:** 800mm (W) x 2200mm (H) x 500mm (D)
- **Inner Dimensions:** 700mm (W) x 2010mm (H) x 500mm (D)

■ Features

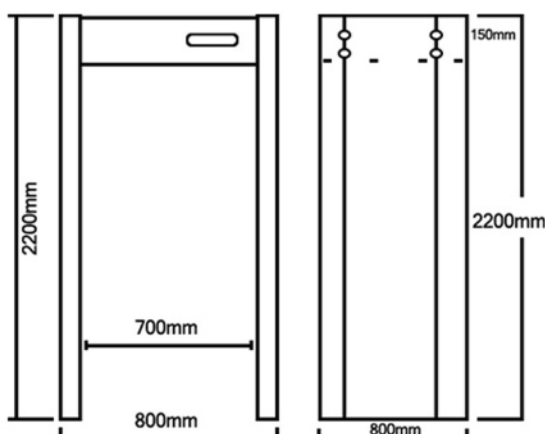
- Detection in 6 Horizontal Zones
- Light weight design, Weighs less than 85Kg
- Vertical L.E.D Light bar indicates location of Threat or multiple threats on LED Light bar
- Automatic and Manual individual zone adjustment to reduce false alarms
- Multiple enviromental conditions
- Excellent discrimination with low unwanted alarm rate, that eliminates the need to empty pockets of normal amount of keys, coins etc..
- Transmitter and receiver sensor positioned in both panels to allow person to be screened both sides



■ Specifications

- **Outer Dimensions:** 800mm x 2200 mm x 500mm
- **Inner Dimensions:** 700mm x 2010 mm x 500mm
- **Zones:** 3 Horizontal / 2 Vertical/ Total 6
- **Weight:** 84Kg
- **Working Temperature / Humidity:** 4F°(-20°C) to +158F(+70°C) ~ 90% (None-condensing)
- **Storage Temperature / Humidity:** -31F°(-35°C) to +158F(+70°C) ~ 90% (None-condensing)
- **Power Supply:** 115 / 230VAC = 15%, 50 60 Hz 40 VA Max


■ Technical Drawing




■ CONTACT US

@ info@akkula.co.uk

 Akkula Group

 +44 (0) 117 318 0845 - UK

 +1 (702) 509 - 7610 - Americas

Follow us on Social Media



12 ZONE WALKTHROUGH - Multi Zone Security Metal Detector

■ Overview

The 12 Zone Walkthrough is a multi-purpose metal detector used for high throughput whilst maintaining a reliable zone detection. The 12 zone's typical applications include Transportation facilities, Asset protection, Corporate security, Correctional facilities, Critical infrastructure, entertainment facilities and government buildings. Several units can also be placed within close proximity without causing any electromagnetic interference.

- **Outer Dimensions:** 800mm (W) x 2200mm (H) x 500mm (D)
- **Inner Dimensions:** 700mm (W) x 2010mm (H) x 500mm (D)

■ Features

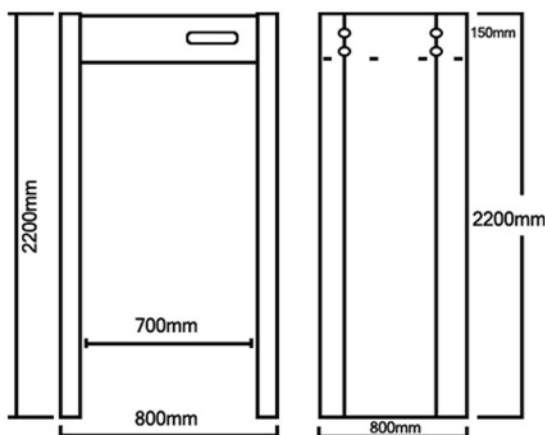
- Detection in 12 Horizontal Zones
- Light weight design, Weighs less than 85Kg
- Vertical L.E.D Light bar indicates location of Threat or multiple threats on LED Light bar
- Automatic and Manual individual zone adjustment to reduce false alarms
- Multiple environmental conditions
- Excellent discrimination with low unwanted alarm rate, that eliminates the need to empty pockets of normal amount of keys, coins etc..
- Transmitter and receiver sensor positioned in both panels to allow person to be screened both sides



■ Specifications

- **Outer Dimensions:** 800mm x 2200 mm x 500mm
- **Inner Dimensions:** 700mm x 2010 mm x 500mm
- **Zones:** 3 Horizontal / 2 Vertical/ Total 6
- **Weight:** 84Kg
- **Working Temperature / Humidity:** 4F°(-20°C) to +158F(+70°C) ~ 90% (None-condensing)
- **Storage Temperature / Humidity:** -31F°(-35°C) to +158F(+70°C) ~ 90% (None-condensing)
- **Power Supply:** 115 / 230VAC = 15%, 50 60 Hz 40 VA Max


■ Technical Drawing




■ CONTACT US

@ info@akkula.co.uk

 Akkula Group

 +44 (0) 117 318 0845 - UK

 +1 (702) 509 - 7610 - Americas

Follow us on Social Media



18 ZONE WALKTHROUGH - Multi Zone Security Metal Detector

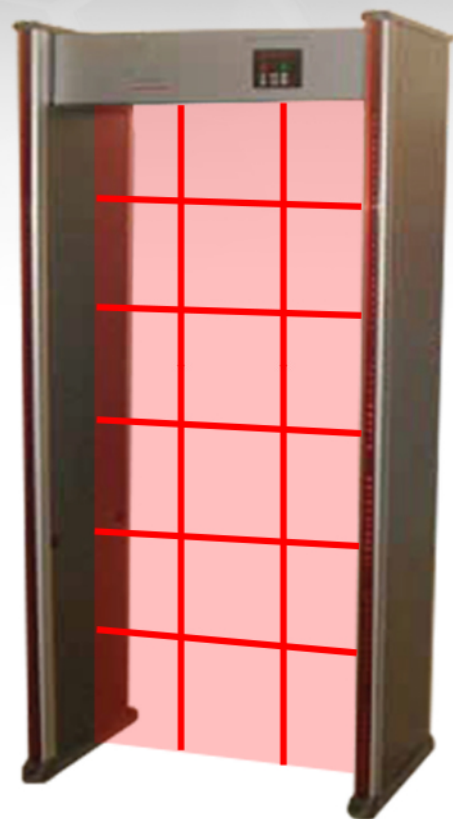
■ Overview

The 18 Zone Walkthrough is a multi-purpose metal detector used for high throughput whilst maintaining a reliable zone detection. The 33 zone's typical applications include Transportation facilities, Asset protection, Corporate security, Correctional facilities, Critical infrastructure, entertainment facilities and government buildings. Several units can also be placed within close proximity without causing any electromagnetic interference.

- **Outer Dimensions:** 800mm (W) x 2200mm (H) x 500mm (D)
- **Inner Dimensions:** 700mm (W) x 2010mm (H) x 500mm (D)

■ Features

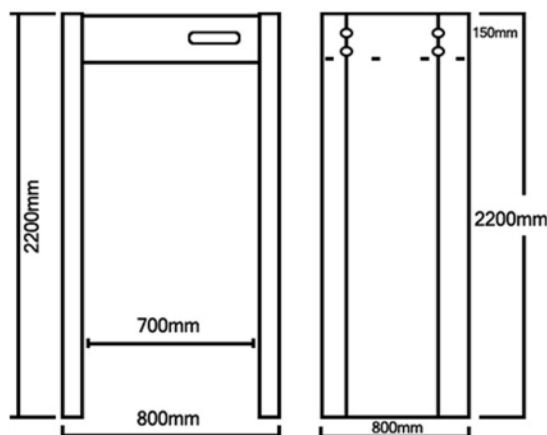
- Detection in 18 Horizontal Zones
- Light weight design, Weighs less than 85Kg
- Vertical L.E.D Light bar indicates location of Threat or multiple threats on LED Light bar
- Automatic and Manual individual zone adjustment to reduce false alarms
- Multiple enviromental conditions
- Excellent discrimination with low unwanted alarm rate, that eliminates the need to empty pockets of normal amount of keys, coins etc..
- Transmitter and receiver sensor positioned in both panels to allow person to be screened both sides



■ Specifications

- **Outer Dimensions:** 800mm x 2200 mm x 500mm
- **Inner Dimensions:** 700mm x 2010 mm x 500mm
- **Zones:** 6 Horizontal / 3 Vertical/ Total 18
- **Weight:** 84Kg
- **Working Temperature / Humidity:** 4F°(-20°C) to +158F(+70°C) ~ 90% (None-condensing)
- **Storage Temperature / Humidity:** -31F°(-35°C) to +158F(+70°C) ~ 90% (None-condensing)
- **Power Supply:** 115 / 230VAC = 15%, 50 60 Hz 40 VA Max


■ Technical Drawing




■ CONTACT US

@ info@akkula.co.uk

 Akkula Group

 +44 (0) 117 318 0845 - UK

 +1 (702) 509 - 7610 - Americas

Follow us on Social Media



33 ZONE WALKTHROUGH - Multi Zone Security Metal Detector

■ Overview

The 33 Zone Walkthrough is a multi-purpose metal detector used for high throughput whilst maintaining a reliable zone detection. The 33 zone's typical applications include Transportation facilities, Asset protection, Corporate security, Correctional facilities, Critical infrastructure, entertainment facilities and government buildings. Several units can also be placed within close proximity without causing any electromagnetic interference.

- **Outer Dimensions:** 800mm (W) x 2200mm (H) x 500mm (D)
- **Inner Dimensions:** 700mm (W) x 2010mm (H) x 500mm (D)

■ Features

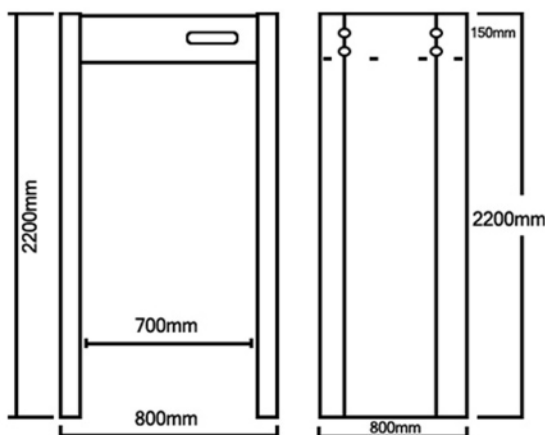
- Detection in 33 Horizontal Zones
- Light weight design, Weighs less than 85Kg
- Vertical L.E.D Light bar indicates location of Threat or multiple threats on LED Light bar
- Automatic and Manual individual zone adjustment to reduce false alarms
- Multiple enviromental conditions
- Excellent discrimination with low unwanted alarm rate, that eliminates the need to empty pockets of normal amount of keys, coins etc..
- Transmitter and receiver sensor positioned in both panels to allow person to be screened both sides



■ Specifications

- **Outer Dimensions:** 800mm x 2200 mm x 500mm
- **Inner Dimensions:** 700mm x 2010 mm x 500mm
- **Zones:** 11 Horizontal / 3 Vertical/ Total 33
- **Weight:** 84Kg
- **Working Temperature / Humidity:** 4F°(-20°C) to +158F(+70°C) ~ 90% (None-condensing)
- **Storage Temperature / Humidity:** -31F°(-35°C) to +158F(+70°C) ~ 90% (None-condensing)
- **Power Supply:** 115 / 230VAC = 15%, 50 60 Hz 40 VA Max


■ Technical Drawing




■ CONTACT US

@ info@akkula.co.uk

 Akkula Group

 +44 (0) 117 318 0845 - UK

 +1 (702) 509 - 7610 - Americas

Follow us on Social Media



VEHICLE-SCAN - Multi Energy X-ray Security Inspection Equipment

■ Overview

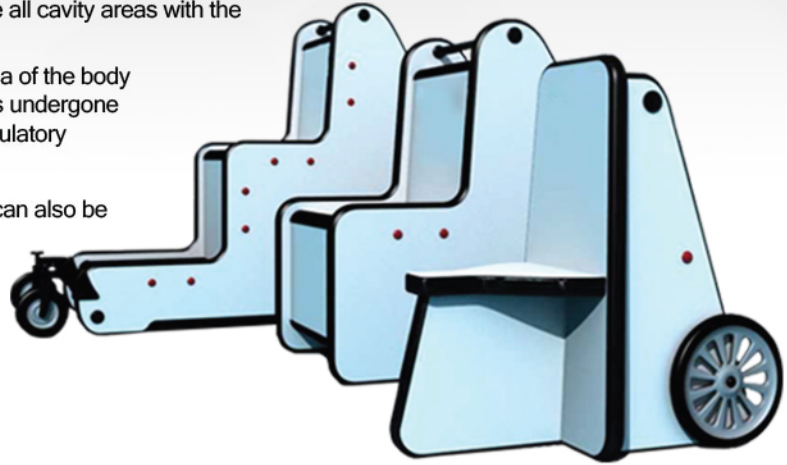
The B.O.S.S Security system is designed for modern security inspection of body cavities through its innovative thechnology design. The operation of the B.O.S.S security system prevents de-grading body orifice manual search that cannot necessarily penetrate all cavity areas with the speed and accuracy of technology detection.

The unit utilises visual and audible alarms to alert the operator to the area of the body cavity that contains concealed objects. The B.O.S.S security system has undergone extensive testing with the UK Home Office and European, American regulatory professional testing agencies.

The B.O.S.S chairs have been designed for HM Prison Operations, but can also be used for a variety of different security detection solutions

■ Features

- **Safe Non-Intrusive, Non-Contact search method**
- **Instantaneous detection in body cavities**
- **Mobile and easily manouvered**
- **User & Operator friendly**
- **High detection & Reliability**
- **Penetrates body cavities**



■ Specifications

- **Outer Dimensions:** 800mmx 2200 mmx 500mm
- **Inner Dimensions:** 700mm x 2010 mm x 500mm
- **Working Temperature / Humidity:**
4F°(-20°C) to+158F(+70°C) ~ 90% (None-condensing)
- **Storage Temperature / Humidity:**
-31F°(-35°C) to+158F(+70°C) ~ 90% (None-condensing)
- **Power Supply:** 115 / 230VAC = 15%, 50 60 Hz 40 VA Max
- **Weight:** 84Kg

■ CONTACT US

@ info@akkula.co.uk

📞 Akkula Group

☎ +44 (0) 117 318 0845 - UK

☎ +1 (702) 509 - 7610 - Americas

Follow us on Social Media



ORIFICE SCANNER- Body Orifice Scanner

■ Overview

The Body Orifice Screening System is designed for modern security inspection of body cavities (human orifices) through its innovative technology design. The Body Orifice screening system minimizes the need for unpleasant intrusive manual searches and increases the safety of prison officers and inmates or other security professionals. Because the measurement method is non-intrusive, it eliminates the liability and safety issues associated with manual searches. It also saves the time and expense involved in X-raying a person suspected of concealing contraband metal in an external medical location causing unnecessary expense and disruption to local operations.

The Unit utilises visual and audible alarms to alert the operator to the area of the body cavity that contains concealed objects. The person sits down on the Body Orifice screening system chair and the system uses a regulated low ionising emission to view the body cavities in the orifices area. This immediately and accurately informs the security operator that the suspect has a concealed threat or contraband items in the body. The advantage is that it can show non-metallic items such as Narcotics, hazardous materials, ceramics, plastics and sim cards. It can also identify metallic items such as razor blades or other metal contraband items.


■ Features


- Safe Non-Intrusive, Non-Contact search method
- Instantaneous detection in body cavities
- Mobile and easily manouvered
- User & Operator friendly
- High detection & Reliability
- Penetrates body cavities
- Detects Narcotics, Sim Cards, Ceramics, Plastics , liquids, all non-metallic items as well as metallic items

■ CONTACT US

@ info@akkula.co.uk

 Akkula Group

 +44 (0) 117 318 0845 - UK

 +1 (702) 509 - 7610 - Americas

Follow us on Social Media



BODY SCAN - Body Orifice Scanner

■ Overview

For those customers who place importance on the prevention of smuggling of precious metals and gems, the Full Body Scanner is an essential security tool. The new machine offers outstanding image quality of the entire body with high image resolution and a flicker free display making it an effective tool for the detection of:

- Precious stones – excluding diamonds
- Precious metals

■ Features

- Fading-in Date/Time
- User ID Number
- Display of Operating Mode
- Save / Recall Images
- Zoom Overview
- Enhancement Filters
- Programmable Keys

■ Specifications

- X-ray dose: 1.73uSv per exposure
- Duty Cycle: 100%
- X-ray Tube: Focus 0.5mm
- Beam Divergence: 80C Max
- System Noise: <70dB(A)
- Image Resolution: 17" LCD 1280 x 1024
- Power Consumption: About 1.2 (KVA)
- Size : (L) 1955mm x (H) 2522mm x (W) 2585mm
- Working Temperature / Humidity:
0C ~ + 45C / 10% ~ 90% (None-condensing)
- Storage Temperature / Humidity:
40C ~ + 60C / 10% ~ 90% (None-condensing)
- Power Supply: AC 230 V (+10% ~ -15%) 50Hz / 60Hz

■ CONTACT US

@ info@akkula.co.uk

📄 Akkula Group

☎ +44 (0) 117 318 0845 - UK

☎ +1 (702) 509 - 7610 - Americas

Follow us on Social Media



STANDARD HANDHELD- Multi Zone Security Metal Detector

■ Overview

The Standard Handheld Scanner is a very popular product among all sectors. The advanced automatic tuning transmit / receive circuitry is housed in a rugged high impact ABS plastic case and detects all metals and alloys. The units de-sensitivity feature and light detection pattern help reduce false alarms when screening at ankle height in the vicinity of floors with rebar. Sensitivity adjustments are made through a screwdriver access hole in the casing, thus reducing the potential for tampering or inadvertent adjustment.

- **Dimensions:** 410mm (L) x 85mm (W) x 45mm (H)
- **Typical Battery Life:** 40 Hours

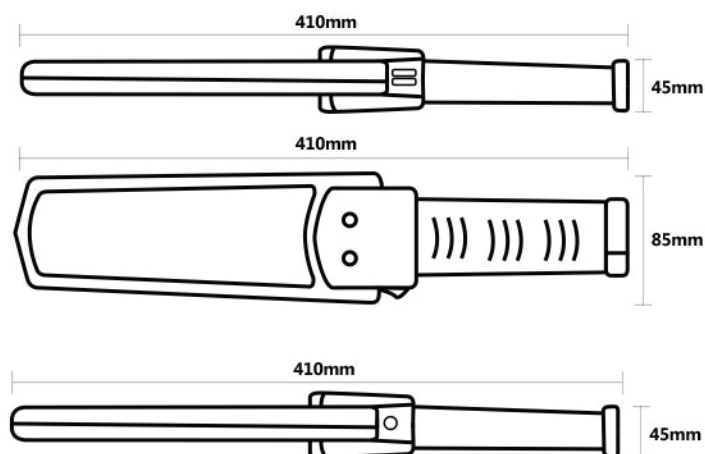
■ Features

- **Audio tone changes as metal size changes**
- **Lightweight comfortable grip with 360 degree detection area**
- **Sealed waterproof construction for extreme environments**
- **Low battery indicator / 9V battery and charger available**
- **Silent alarm mode / red LED mode / audio buzzer mode**
- **New high volume audio alert can easily be heard against normal to moderate background noise. Also contains headphone jack**
- **De-sense button and tightly controlled detection pattern allows for efficient weapons screening near floors containing re-bar**

■ Specifications

- **Operating frequency:** 52kHz
- **Operating temperature:** -20 to 45°C
- **Weight:** 409g
- **Dimensions:** 410mm (L) x 85mm (W) x 45mm (H)
- **Power requirement:** Unit requires standard

■ Technical Drawing



■ CONTACT US

@ info@akkula.co.uk

📞 Akkula Group

☎ +44 (0) 117 318 0845 - UK

☎ +1 (702) 509 - 7610 - Americas

Follow us on Social Media



SENSITIVE HANDHELD- Multi Zone Security Metal Detector

■ Overview

The Sensitive Hand Held Scanner is a high sensitivity device designed to detect magnetic and non magnetic metal masses. It can be used for detecting weapons, detonators, or other small pieces of metal by people, concealed in baggage or in correspondence.

Its bidirectional detection probe allows either its lower or upper side to detect metals evenly. The special shape of the sensitive surface makes operation of the device easy, unlike other portable metal detectors.

- **Dimensions:** 340mm (L) x 80mm (W) x 55mm (H)
- **Typical Battery Life:** 40 Hours

■ Features

- **Detection of both magnetic and non-magnetic metal**
- **Three-position switch with selection of two different alarm modes**
- **Pre-calibrated sensitivity that can be modified by using an internal trimmer**
- **Low battery indicator / 9V battery and charger available**
- **Silent alarm mode / red LED mode / audio buzzer mode**
- **Optical and Acoustic alarm (10% alarm operation, 90% quiescent operation)**
- **Self-calibrating / Special ergonomic shape**

■ Specifications

- **Operating frequency:** 52kHz
- **Operating temperature:** -20 to 70°C
- **Weight:** 400g
- **Dimensions:** 340mm (L) x 80mm (W) x 55mm (H)
- **Power requirement:** 9V re-chargable Ni-MH battery

■ CONTACT US

@ info@akkula.co.uk

📄 Akkula Group

☎ +44 (0) 117 318 0845 - UK

☎ +1 (702) 509 - 7610 - Americas

Follow us on Social Media



LARGE LOOP - Mine Clearance And Detection Technology

■ Overview

The Large Loop is a Mine clearance and detection technology. It is used in active service in Iraq, Afghanistan, Africa and Falkland islands to great success by the British Army

The Large Loop Pulse Induction metal detector is an ideal tool for the subsurface search on UXO and to survey large areas. The support frame for the sensing loop can be assembled in a 1m x 1m shape or in a 2m x 1m or larger configurations depending on requirements

The Large loop detects ferrous and non-ferrous metal objects. In adequate terrain it can inspect up to 2,5 ha/per day and machine. It can also be fitted to a vehicle or armoured carrier

■ Features

To improve work progress even further it is equipped with a DELAY adjuster. This feature serves to desensitize the search equipment against small metal scrap and unwanted fragments from exploded ordnance.

Target acquisition is indicated in realtime by an audio alarm and LED Sensors or a watertight and shockproof LED bargraph. For a digital survey detection data/results can be recorded by means of the EPAD Data logger. The detection data can be downloaded later onto a Laptop or PC for processing and visualisation by the EPAS software. This version meets the requirements of GIS systems and greatly supports QA/QC.


The Large Loop Detector for UXO is by far simpler to use than magnetic anomaly locators and compares in most features to a standard metal detector. Detection signals are easy to interpret and no advanced training is required for the operators. It can be operated by two or by one operator, depending on the accessories chosen




■ CONTACT US

@ info@akkula.co.uk

 Akkula Group

 +44 (0) 117 318 0845 - UK

 +1 (702) 509 - 7610 - Americas

Follow us on Social Media



LIQUID IN HAND - Liquid/Explosive Trace Detection

■ Overview

The Liquid IN-Hand is a light weight handheld liquid detection device which is capable of detecting hazardous liquid without any direct contact. The Liquid IN-Hand is capable of identifying more than 50 kinds of dangerous liquids whilst penetrating liquid containers up to 8mm thick, eliminating the need to open liquid container.

- **Object Penetration: 8mm non-metal**
- **Dimensions: 210mm (L) x 50 mm (W) x 70 mm (H)**

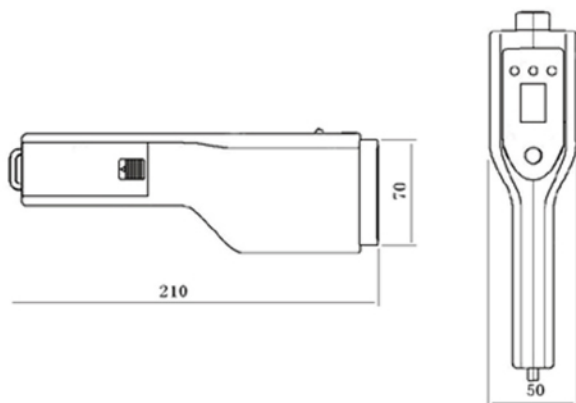
■ Features

- **Detects liquid in glass, plastic ceramics and more..**
- **High speed detection in 20 seconds or less per liquid object**
- **Detects hazardous liquids without the need to open the container**
- **Automatic shut down feature to avoid draining the battery**
- **Container size and air between detector and container wont affect results**

■ Specifications

- **Effective Distance: Within 3mm**
- **Dangerous Liquid Display: Red "X"**
- **Safe Liquid Display: Green "O"**
- **Unknown Liquid Display: Yellow "?"**
- **Power Attenuation: 0.75VA**
- **Operating Current: 250mA**
- **Maximum Container Thickness: 8mm Non-metal**
- **Size / Weight: 210mm (L) x 50mm (W) x 70mm (H) / 190g**
- **Working Temperature / Humidity: 0C ~ + 35C / 0% ~ 95% (None-condensing)**
- **Storage Temperature / Humidity: -40C ~ + 60C / 0% ~ 95% (None-condensing)**
- **Working Voltage: 3V**

■ Technical Drawing



■ CONTACT US

@ info@akkula.co.uk

📞 Akkula Group

☎ +44 (0) 117 318 0845 - UK

☎ +1 (702) 509 - 7610 - Americas

Follow us on Social Media



INSPECTION MIRROR - Under Vehicle Inspection

■ Overview

Inspection mirrors are an excellent tool for viewing the undersides of Vehicles, Machines, Trucks, School Buses, Construction or Industrial Equipment, or generally any hard-to-see areas. Used in airport security, police traffic inspections, auto emissions inspections, and military check points. Available from lightweight hand-held to complete with caster wheels and light. Has an adjustable, light-weight, aluminum handle for greater flexibility.

- **Low 3-1/2" Ground Clearance**
- **Available in Round Convex or Flat Mirror Lens**
- **Available in 3 Sizes**

■ Features

- **Available in Round Convex or Flat Mirror Lens**
- **Equipped with adjusted Telescopic arm**
- **Available with Flashlight, Rechargeable Batteries, and Mounting Bracket**
- **Available with Tripod Ball-Bearing Caster Wheels**
- **51" Light Weight Aluminum Handle**
- **Has a Heavy Duty Extruded Rubber Rim to help Prevent Damaging Objects when Maneuvering**
- **Available with Tripod Ball-Bearing Caster Wheels, Allowing Full Range of Motion with Effortless**

■ Specifications

- **All Mirrors equipped with Adjustable Swivel for Infinite Adjustment**
- **Shatter proof mirror**
- **Low 3-1/2" Ground Clearance**


■ Available Sizes


- **GP-CN - 30cm Diameter**
- **GP -911 - 30.5cm Diameter**
- **GP-912 - 14.5cm Diameter / 5 sections handlebar**

■ CONTACT US

@ info@akkula.co.uk

 **Akkula Group**

 **+44 (0) 117 318 0845 - UK**

 **+1 (702) 509 - 7610 - Americas**

Follow us on Social Media



PORTABLE INSPECTION SYSTEM - Under Vehicle Inspection

■ Overview

Akkula's under vehicle inspection system can be portable or fixed, and is used to identify any suspect objects attached to the underside of vehicles, using cutting edge imaging technology to display the entire underside of a vehicle in one image.

We also offer an enhanced under vehicle inspection system that offers system integration and LED detection capability.

Optional extras include automatic number plate recognition software and mismatch software as upgrades.

- **Dimensions: 970mm x (L) 490mm x (W) 71mm (H)**
- **Completely automated for real-time viewing**

■ Features

- **Completely automated for real-time viewing**
- **Easy and fast to deploy by one person.**
- **lightweight, has a carrying handle and can be transported in the boot of a car**
- **The unit is attached to a ruggedised laptop which runs the**
- **Under normal operation vehicles do not touch the unit; however it is tough enough to withstand impact**
- **Uses cutting edge imaging technology to display the entire underside of a vehicle in one image**

■ Specifications

- **Accurately Scans approximately 5 - 6 cars per minute**
- **Dimensions : 970mm (L) x 490mm (W) x 71mm (H)**
- **WI-FI Capable**

■ CONTACT US

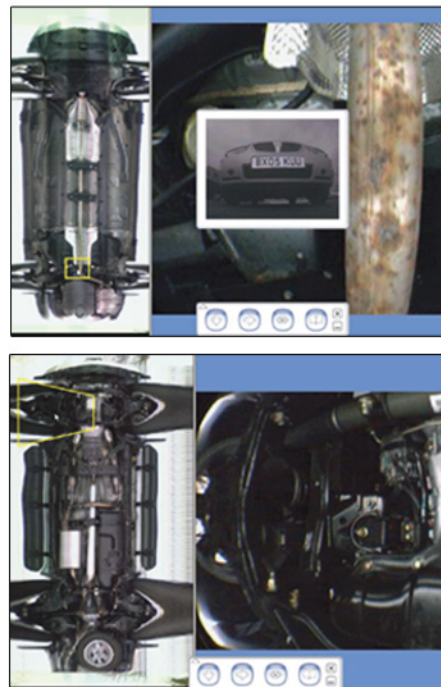
@ info@akkula.co.uk

📞 Akkula Group

☎ +44 (0) 117 318 0845 - UK

☎ +1 (702) 509 - 7610 - Americas

Follow us on Social Media



TYRE KILLER - Under Vehicle Inspection

■ Overview

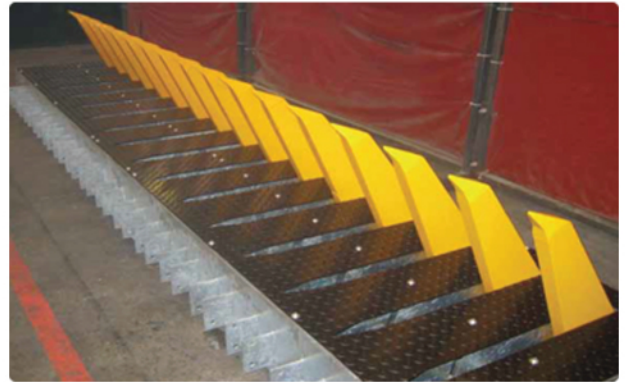
The Akkula Tyre Killer Barrier is designed for use in high security high traffic applications. The Tyre killer barrier is a simple to install highly secure vehicle control barrier.

The tyre killer teeth retract below ground level when a signal is received from the push button or integrated access control unit providing safe access for authorised vehicles. When the vehicle has passed, the teeth return to the active position, ensuring total protection from unauthorised vehicle intrusion.

Tyre killer barriers may be used with any type of access control system. We recommend that the Tyre Killer is used in conjunction with a rising arm barrier and an underground inductive detector loop to act as a safety device to prevent the barrier operating when an authorised vehicle is stationary over the teeth

■ Features

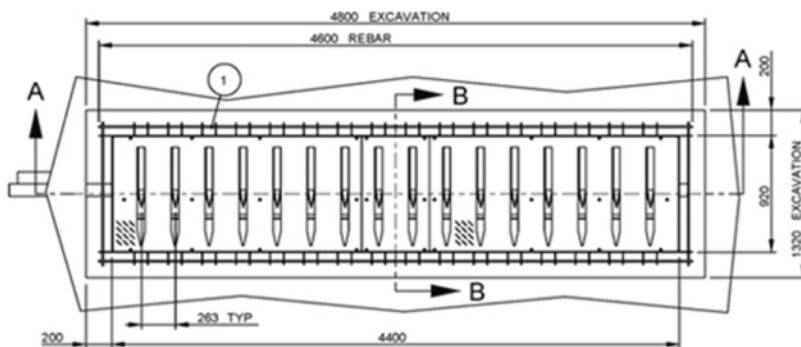
- Full electrical isolation and overload protection
- Manual operation facility with safety interlock
- Electro/hydraulic operation
- Height in raised position 475mm
- Fully galvanised and powder coated
- Maximum protection in extreme environments
- Added Benefit - Low maintenance
- Added Benefit - Ease of installation



■ Specifications

- Dimensions: To suit your sites requirements
- HPU Cabinet -640/940mm (W) x 670mm (L) x 1300mm (H)
- Low 3-1/2" Ground Clearance
- Basic Power requirements: 3-Phase 415V AC, 50Hz, 20 amps (other voltages are available) Control Voltage S.E.L.V 24 v
- Construction: The framework is constructed from fully welded, heavy gauge, steel angle and box section and hitensile structural steel

■ Technical Drawing



■ CONTACT US

@ info@akkula.co.uk

📞 Akkula Group

☎ +44 (0) 117 318 0845 - UK

☎ +1 (702) 509 - 7610 - Americas

Follow us on Social Media



LIQUID E-SIGHT - Liquid/Explosive Trace Detection

■ Overview

The Liquid E-Sight is X-ray liquid detection system which is capable of detecting and differentiating the difference between Safe, Suspect and Dangerous types of liquid. The Liquid E-Sight has high speed detecting capabilities, providing results to the operator in 20 seconds or less whilst maintaining a high through-put for all scales of operations. The Liquid E-Sight is capable for detecting liquids in glass, plastic, metal, ceramics and other normal packaging material.

- **Object Size:** 150mm (D) x 250mm (H)
- **Dimensions:** 1050mm (L) x 720 mm (W) x 1205 mm (H)

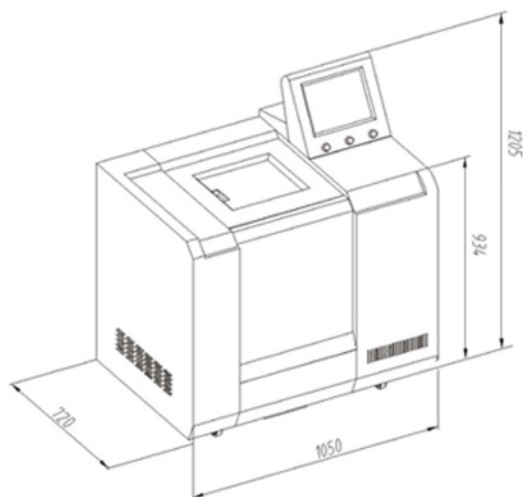
■ Features

- Detects liquid in glass, plastic, metal, ceramics and more..
- High speed detection in 20 seconds or less per liquid object
- Wheel with lock, for easy moving and fixing
- Video image and CT image of detected object for analysing and tracing
- Power on / running self-diagnostics function
- Detects and differentiates water, milk, alcohol, gas, lacquer thinner, sulphuric acid and other liquids with their danger levels of: Safe, Suspect and Danger

■ Specifications

- **Object Size:** 150mm (D) x 250mm (H)
- **Detecting Speed:** 180 pc/Hour
- **X-ray Generator:** 80KV Combination
- **Cooling/Duty cycle:** Sealed oil cooling 100%
- **System Noise:** <60dB (A)
- **Beam direction:** Horizontal irradiation
- **Power Consumption:** About 0.50 (KVA)
- **Size / Weight:** 1050mm (L) x 720mm (W) x 1205mm (H) / 350KG
- **Working Temperature / Humidity:** 0C ~ + 45C / 20% ~ 95% (None-condensing)
- **Storage Temperature / Humidity:** 40C ~ + 60C / 20% ~ 95% (None-condensing)
- **Power Supply:** AC 220 V (+10% ~ -15%) 50+3(Hz)

■ Technical Drawing



■ CONTACT US

@ info@akkula.co.uk

📞 Akkula Group

☎ +44 (0) 117 318 0845 - UK

☎ +1 (702) 509 - 7610 - Americas

Follow us on Social Media



LIQUID IN HAND - Liquid/Explosive Trace Detection

■ Overview

The Liquid IN-Hand is a light weight handheld liquid detection device which is capable of detecting hazardous liquid without any direct contact. The Liquid IN-Hand is capable of identifying more than 50 kinds of dangerous liquids whilst penetrating liquid containers up to 8mm thick, eliminating the need to open liquid container.

- **Object Penetration: 8mm non-metal**
- **Dimensions: 210mm (L) x 50 mm (W) x 70 mm (H)**

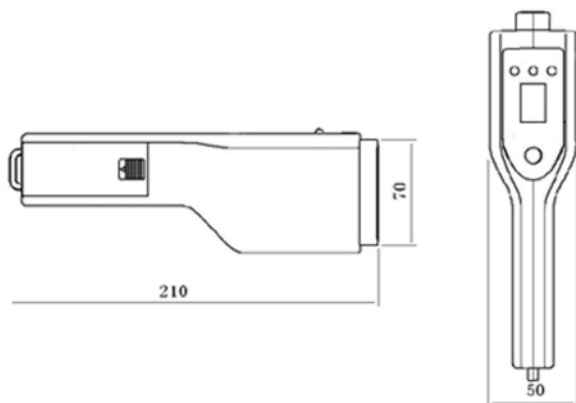
■ Features

- **Detects liquid in glass, plastic ceramics and more..**
- **High speed detection in 20 seconds or less per liquid object**
- **Detects hazardous liquids without the need to open the container**
- **Automatic shut down feature to avoid draining the battery**
- **Container size and air between detector and container wont affect results**

■ Specifications

- **Effective Distance: Within 3mm**
- **Dangerous Liquid Display: Red "X"**
- **Safe Liquid Display: Green "O"**
- **Unknown Liquid Display: Yellow "?"**
- **Power Attenuation: 0.75VA**
- **Operating Current: 250mA**
- **Maximum Container Thickness: 8mm Non-metal**
- **Size / Weight: 210mm (L) x 50mm (W) x 70mm (H) / 190g**
- **Working Temperature / Humidity: 0C ~ + 35C / 0% ~ 95% (None-condensing)**
- **Storage Temperature / Humidity: -40C ~ + 60C / 0% ~ 95% (None-condensing)**
- **Working Voltage: 3V**

■ Technical Drawing



■ CONTACT US

@ info@akkula.co.uk

📞 Akkula Group

☎ +44 (0) 117 318 0845 - UK

☎ +1 (702) 509 - 7610 - Americas

Follow us on Social Media

